

A Giant Leap in Interpreting Earth Energy Lines

Don Wells © 2017

Explaining a phenomenon where no prior scientific studies exist takes a giant leap of intuitive thinking. For the most part, some of the physical evidence of their existence can be partially measured and the remainder of the phenomenon explained through empirical data findings. This report is my attempt to explain Earth Energy Lines based on the physical evidence and the physics of energy flow under the Principal of Energy Conservation.

Beyond our attempt to explain the existence of the energy lines, is to then explain how the Native American's could sense the existence of this energy phenomenon and used it to place sacred sites directly over or near the lines. The question of "Why" is another whole study for future endeavors.

INTRODUCTION

The Mountain Stewards Indian Cultural Heritage Program stumbled onto Earth Energy Lines a year ago and have struggled to explain their existence ever since. After several attempts to analyze what type of energy these lines were, we finally determined them to be gamma radiation based on our physically measuring the lines using a MAZUR PRM-9000 Radiation Monitor. These gamma radiation lines are well within the background radiation levels of the earth. The radiation value for a single line was determined to average around 0.016 to 0.017 millirems/hr. For points where two lines cross forming a node, the value was measured at 0.022 to 0.023 millirems/hr. For nodes where more than two lines crossed, the value was higher having a value of 0.038 millirems/hr for six lines. In making the measurement of the radiation levels of the lines, it was found that the radiation levels are not steady. Therefore, in determining a value for the radiation line, a measurement must be made over time (minutes) and then use an average reading for the value.

David Biello writing for the *Scientific American* in July 2011, stated scientists had determined that "radioactive decay provides more than half of the Earth's total heat, estimated at roughly 44 terawatts." He went on to say that, "Some of that heat may have been trapped in the Earth's molten iron core since the planets formation, while the nuclear decay happens primarily in the crust and mantle." It is this nuclear decay that we think is the cause of the energy lines.

PHYSICS OF THE LAW OF CONSERVATION OF ENERGY

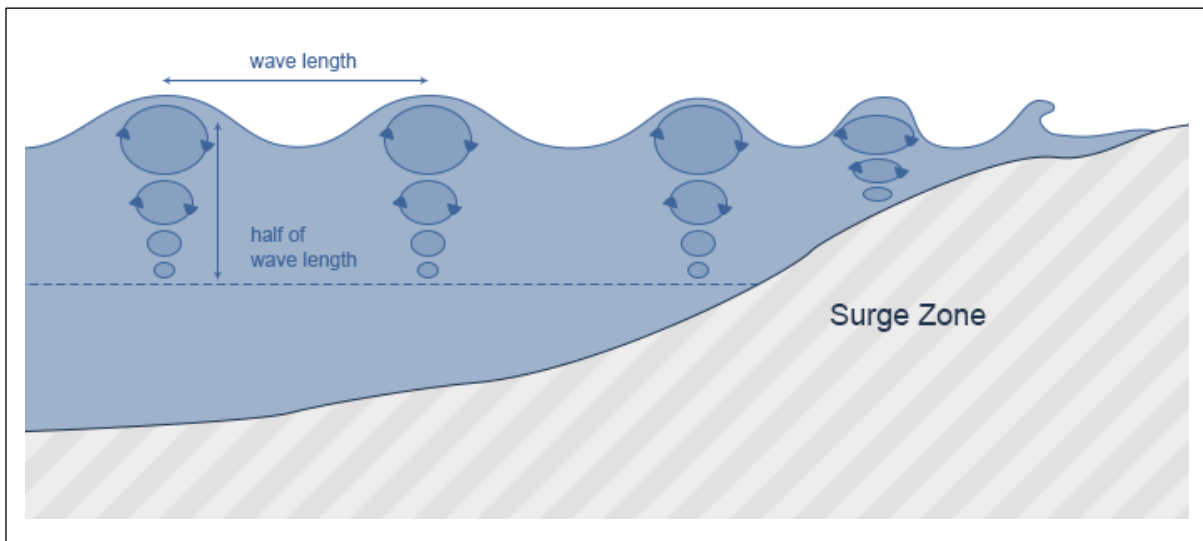
In physics, the **Law of Conservation of Energy** states that the total energy of an isolated system in a given frame of reference remains constant — it is said to be *conserved* over time. Thus, energy can neither be created nor destroyed; rather, it can only be transformed from one form to another. The differential equations that describe conservation of all types of energy are beyond the scope of this paper but suffice it to say they are beyond complex.

In the late 1960's, I was a graduate student at Texas A&M University studying Ocean Engineering. This was a new field of study that was housed in the Civil Engineering Department and coupled to the Oceanography Department. Once again, my life was filled with differential equations and

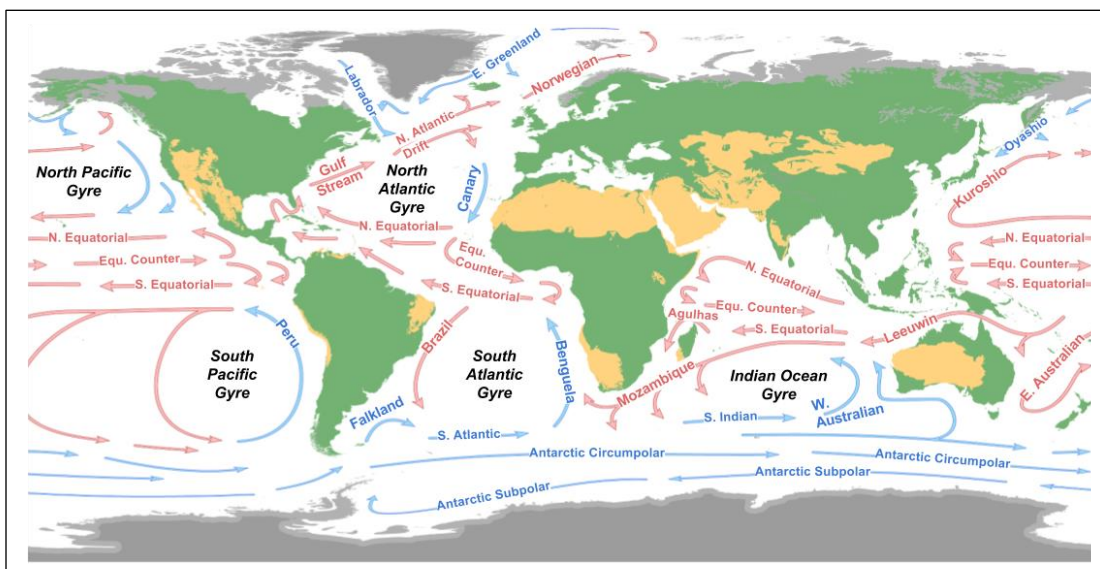
math beyond where I wanted to go. But all of that training in understanding wave mechanics and ocean currents has helped me in understanding Earth Energy Lines since all energy follows the same principle: you can neither create nor destroy energy; it has to follow the Conservation of Energy Principle.

Ocean Wave, Current and Air Mass Mechanics

The average person observing the waves approaching the beach consider that the waves are linear or flowing in a translational manner. In fact, the wave energy of each water particle is circular in motion and follows the conservation of energy principles as shown in the figure below. As the wave gets closer to land the circle of energy flattens out being affected by friction and continues that way until the wave break and the energy translates into linear movement of water onto land.

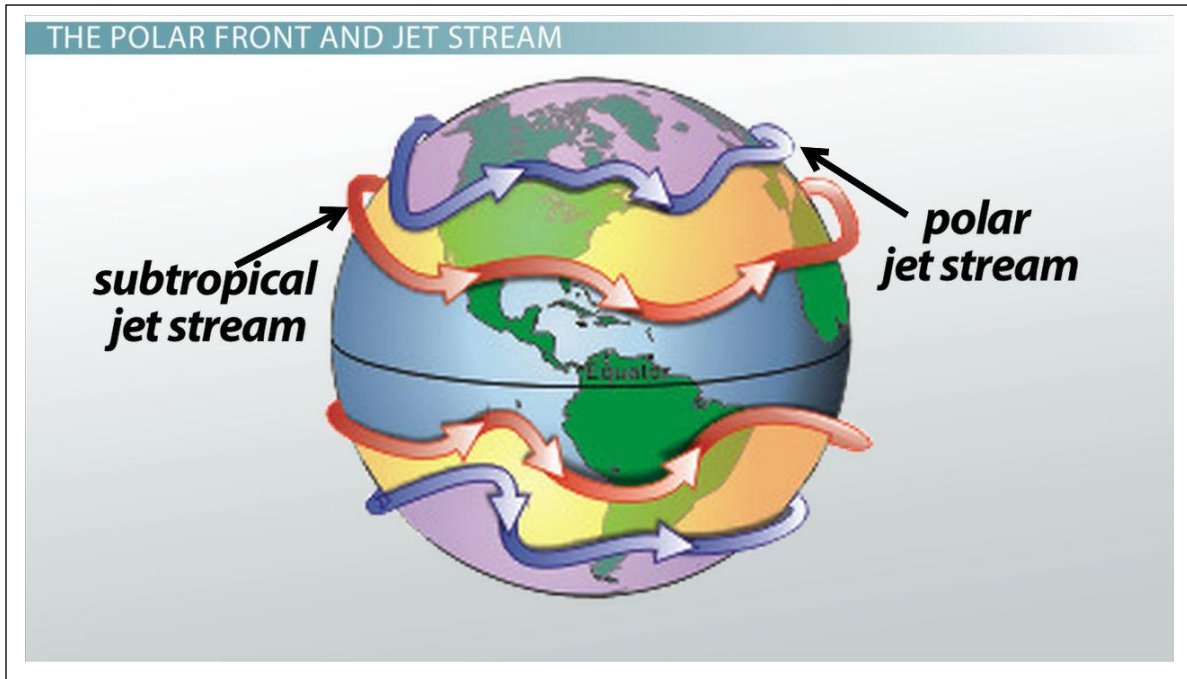


Likewise, ocean currents follow the same principle in that they flow in a somewhat circular pattern affected by land masses, bottom topography and other things that affect their flow pattern.



For example, the Gulf Stream begins its journey in the Gulf of Mexico, goes through the Florida Straights and then flows north along the east coast of the US and Canada before heading east to the UK and then south along the European continent before turning west along the Equator to return the Gulf of Mexico to begin its journey all over again. The flow is somewhat circular and it never stops. All the other currents follow the same principles.

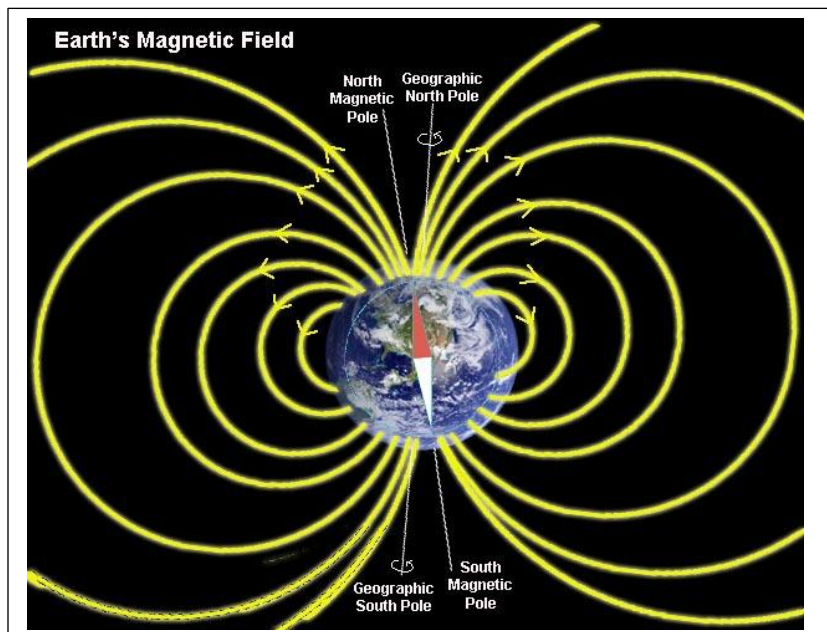
Air Mass currents are similar following the same principles as shown below



Other Energy Types

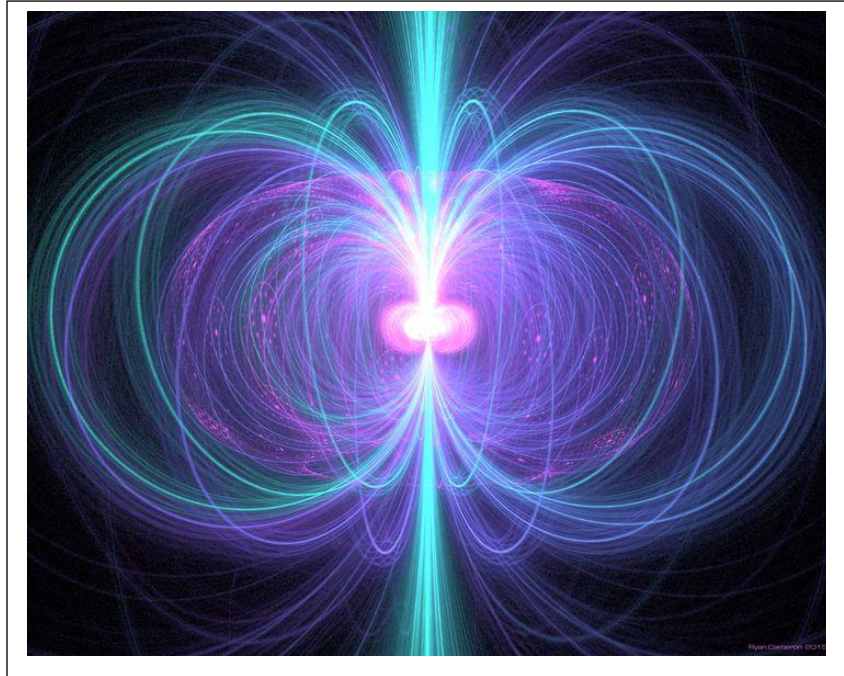
The Earth's magnetic field is an energy spectrum, that like all others, follows a somewhat circular pattern only to be impacted by other special objects such as the moon.

Astronomers studying the energy patterns around stars have found similar patterns of energy flow as have been seen in each type of energy. The pattern of energy around a star is shown on the next page.



Intuitive Assessment of Energy Flow of Earth Energy Lines

Since all energy must follow the **Principle of Conservation of Energy**, it can be stated that Earth Energy Lines must follow the same principles. Further, if these lines are indeed caused by the release of gamma radiation in the crust and mantle, then it would seem that the energy would form somewhat circular patterns of energy coming out of the earth and then going back into



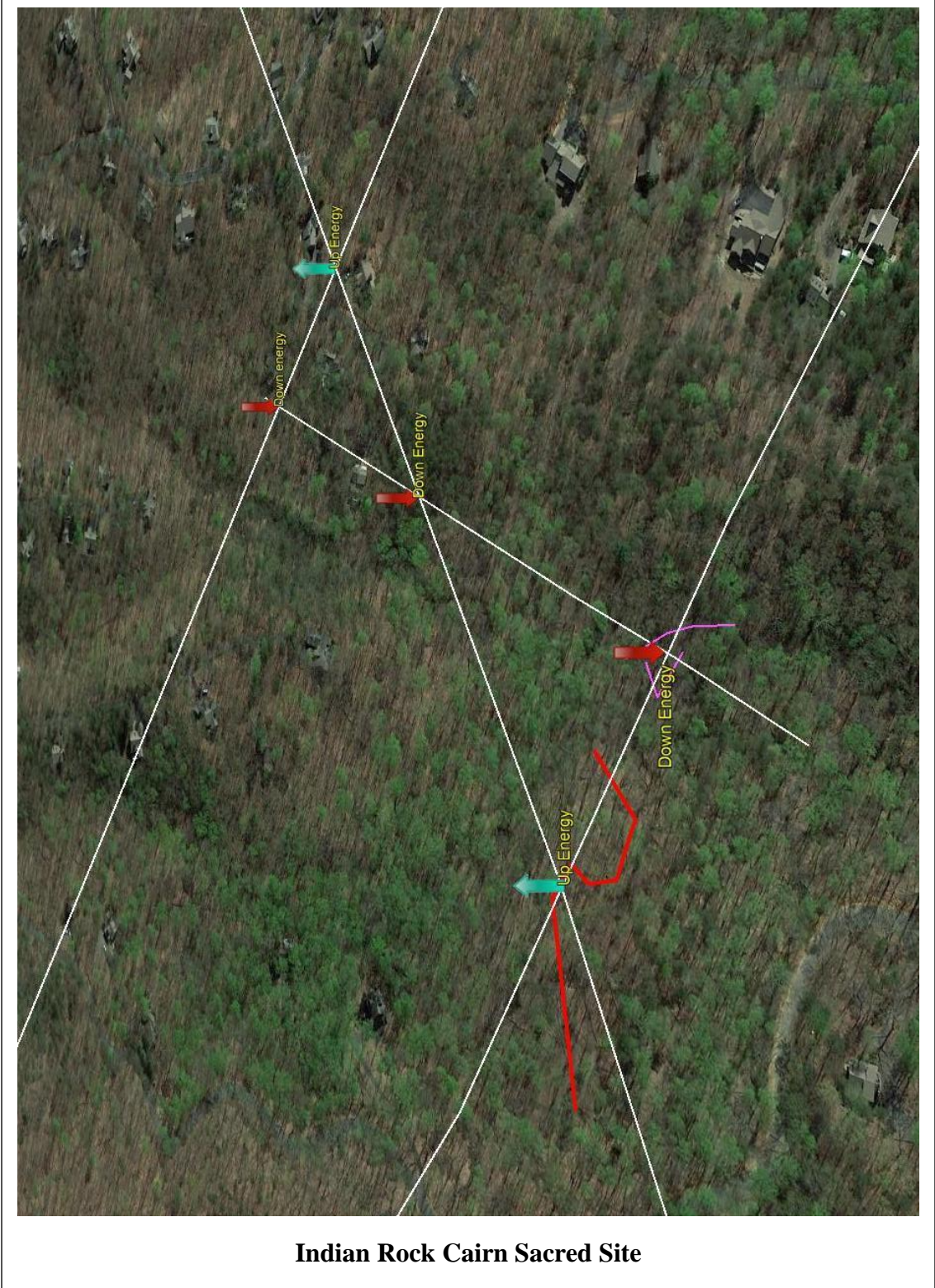
the crust/mantle to create a continuous flow of energy. These lines of energy therefore are probably not long lines crossing long distance of the earth but rather shorter lines or couplets of energy coming out of the ground and going back down in a distance probably governed by the density of the earth in that area.

Measuring where the lines are located is done with dowsing as the rods sense the energy and rotate outwardly from the body to form a 180-degree pattern in front of the person holding the rods. We can then measure the line using the Gamma Radiation Meter to ascertain their existence. Measuring gamma radiation flow is not a simple task but it seems to follow the same principles of measure underground water flow. Underground water flow is measured by holding one dowsing rod over the underground stream and the rod will turn and align to the direction of water flow. Likewise, the rods will do the same thing for gamma radiation flow and point in the direction of flow. Thus, one can stand near a node where several lines cross and determine which way the energy is flowing as the rods will point in that direction. Therefore, if the direction of flow is away from the node, then the energy is coming out of the ground at the node. Likewise, if the rods point toward the node, then the energy is flowing into the ground.

Georgia Rock Cairn Site

The Indian Rock Cairn site in GA has been determined to be an Indian Sacred Burial site probably on the order of 500 years old. This site was used to test the hypothesis of the flow of energy lines. At this site are large rock cairns arranged in the celestial pattern of the Big Dipper and small rock cairns arranged in the celestial pattern of the Pleiades. Why the Indigenous people who build this site many years ago chose these celestial pattern is not known. There are numerous Earth Energy Lines at the site which cross at nodes within the large and small rock cairn sites and elsewhere within a short distance from the cairns. Each of these Energy Lines have been studied to determine

flow direction and value of radiation. A Google Earth image of the site is shown below with flow direction indicators on the map.



As can be seen on the Google Earth image of the site, the Earth Energy flows out of the ground at the Big Dipper cairn site and flows back into the ground at the Pleiades cairn site just the southeast. These Earth Energy Lines have been tracked to the east where the two east-west lines flow and join to create another down flow node. Beyond this node is another north south line crossing these lines forming two more nodes one of which is an up flowing node and the other a downward flowing node. Because this area is connected to private property, we cannot make a complete survey of all the energy lines and connectivity. However, from what can be seen, it appears that Earth Energy Lines are following the Principle of Conservation of Energy. Couplets of energy are formed with a seemingly circular flow pattern into and out of the earth. How far this energy goes back into the ground is unknown but likely back to the source of where the radioactive material was transformed by heat and released the gamma radiation. Likewise, how far this energy flows above the ground is not known either. It would be instructive to try and measure the energy at different heights above the ground to make a determination on height of flow.

In the future, each Indian sacred site that is mapped to show underground water and Earth Energy Lines, will be studied to determine energy flow patterns and to make a better assessment of sacred site characteristics. From these determinations, hopefully, we can understand better the significance of the site and its purpose which will help is preserving this cultural heritage.