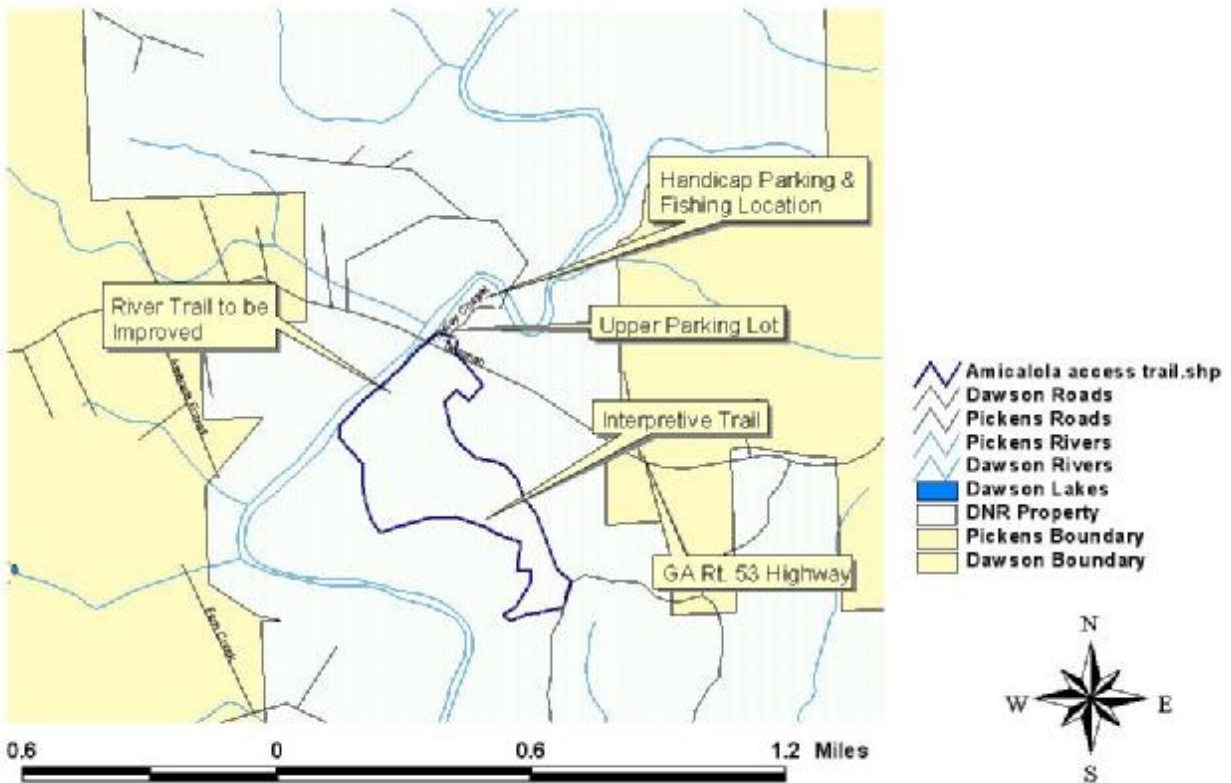


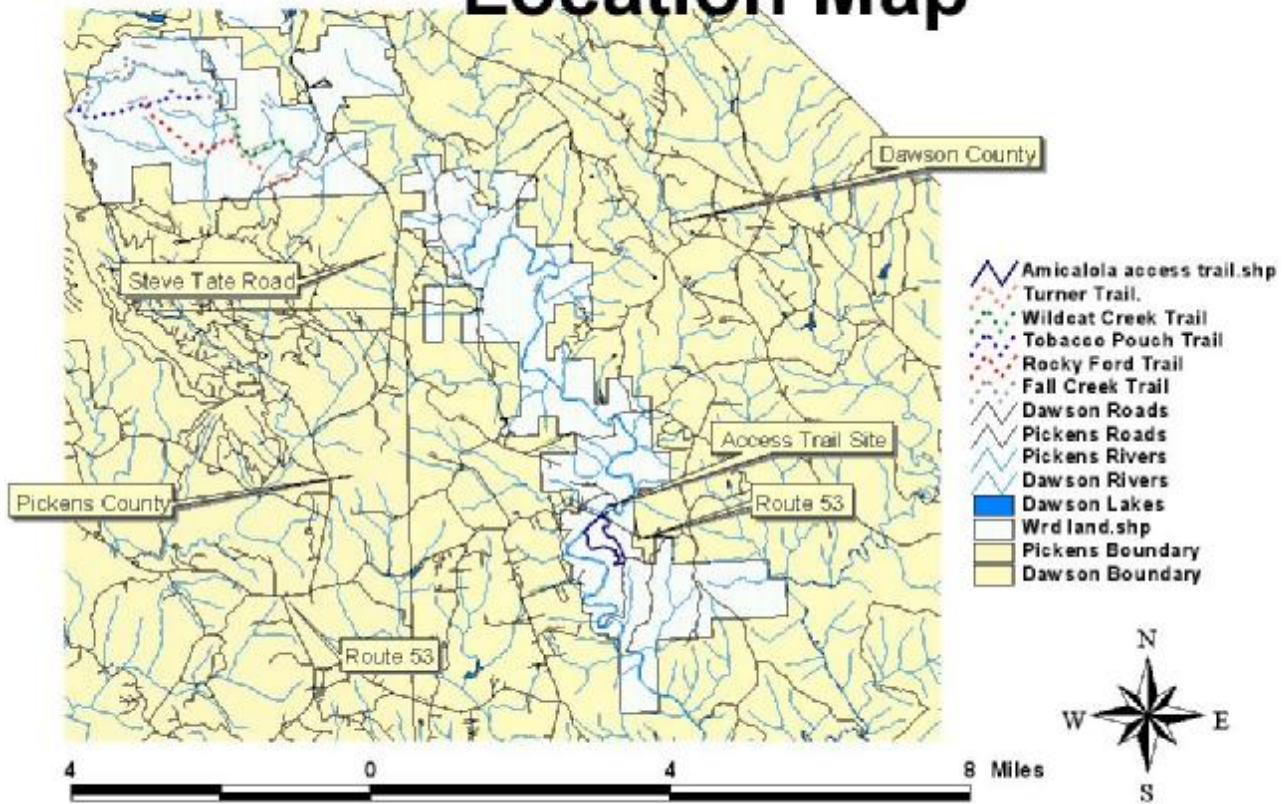
# Amicalola Access Site



This map shows the location of that part of the Amicalola Loop Trail in Dawson County that was improved to become an ADA Handicap Access Trail. A total distance of 2,200 ft of trail were built from the handicap parking area to a point just short of the End of the World Rapids. The trail is a raised wooden platform ADA trail located along one of the remaining wild rivers in North GA. This trail now provides access to not only handicap people but all recreational users as well including hikers, fisherman, wild flower enthusiasts, canoeists, bird watchers and other folks wanting to experience nature.

Since the trail was opened, it has been overwhelmed with users and is now one of the most used trails in North GA.

# Amicalola Access Trail Location Map



This map show the location of the trail in the Dawson Forest, in Dawson County off of Rt 53.

Pictures of the trail as now built follow:



Start of trail at handicap parking area.



First rest stop along trail located every 200 ft.



Trail going south with Mountain Laurel



From upper parking lot there are stairs going down to the walking trail.



At the bottom of the stairs is the 2<sup>nd</sup> rest stop bench.



Foot Bridges are built over creeks.



Trail going under the Rt. 53 highway bridge



Rest spot south of the bridge where the circa 1860 covered bridge was located crossing over Amicalola River.



Ramps built to ADA standards are located on the trail where elevation changes require them.





Trail going south toward rapids.



Trail passing through Laurel thicket.



Trail approaching observation platform.



Platform at rapids with wheelchair parking.

