

# The Earth Energy Grids

Don & Diane Wells ©

## BACKGROUND

The earth as we know it, has multiple energy grids beginning with the magnetic shield which provides protection of the earth by deflecting most of the solar wind, whose charged particles would otherwise strip away the ozone layer that protects the Earth. It also protects us from harmful ultraviolet radiation. This energy grid is widely known, researched, documented and accepted by scientists.

On the surface and subsurface of the earth, there are estimated to be at least several more energy grids less well known and open to debate by the scientific community. Those that are pursuing their research of these energy grids are making remarkable progress. Seemingly, the largest grid may be the Ley Lines that surround the earth in established patterns as well as interconnecting into a somewhat precise matrix enveloping the Earth. The literature on Ley Lines is extensive. There seems to be sufficient evidence amassed that, if one has an open mind, one can clearly see that this energy grid does in fact exist.

Paul Devereux wrote a comprehensive paper in 1996 summarizing the knowledge base of “Ley Lines.” In his paper, he stated that in 1921 Englishman Alfred Watkins began his observational studies of what he later called “Ley Lines.” The name is derived from the Anglo-Saxon word meaning “cleared strips of land.” Devereux stated that, “Watkins discovered that prehistoric places, such as standing stones, earthen burial mounds, prehistoric earthwork hills, and other such features fell into straight lines for miles across the British countryside. Watkins spent many years studying such alignments on the ground and on maps.” Watkins wrote books about the straight lines he observed. His most important book *The Old Straight Track* was published in 1925. That book resulted in the formation of the Straight Track Club in which people all over Britain conducted field research looking for alignments of sites, and perhaps remnants of old straight tracks lying along them. Watkins’s research continued until 1935 when he died. Devereux pointed out that Watkins was not the first to observe these lines. British, French, American and German researchers had been observing similar phenomenon since at least the 18th century.

In his 1996 paper, Devereux went on the point out that, “Archaeological evidence of the ancient practice of building spirit ways has survived best in the Americas. In Ohio, between 150 BC and 500 AD, the Hopewell Indians built geometrical earthworks covering many acres, along with straight linear features which seem to have been ceremonial roadways. In 1995, archaeologists announced the discovery of a 60-mile-long, dead straight Hopewell ritual road connecting earthworks at Newark with the Hopewell necropolis at Chillicothe.” More of these straight features were discovered in Utah, Colorado and Arizona. The most impressive of which were found in New Mexico at Chaco Canyon. Many of the Chacoan roads stretch for over 60 miles

beyond the canyon, some much further. They linked Anasazi ceremonial "Great Houses", of which there are many dozens scattered throughout the desert area surrounding Chaco Canyon.

Today, the evidence is overwhelming that the ancients and Indigenous Peoples had a clear understanding of this energy grid system and used it to align some, if not all, of their sacred places. It would seem that connecting sacred places together in an energy grid system was a critical criterion for maintaining the sacredness of a place. The energy grid system may have also been a way for sacred sites to communicate across the landscape. Our research has shown that the Ley Line energy grid is magnetic in character.

## **THE SOMEWHAT UNKNOWN ENERGY GRIDS and THEIR USE by INDIGENOUS PEOPLE**

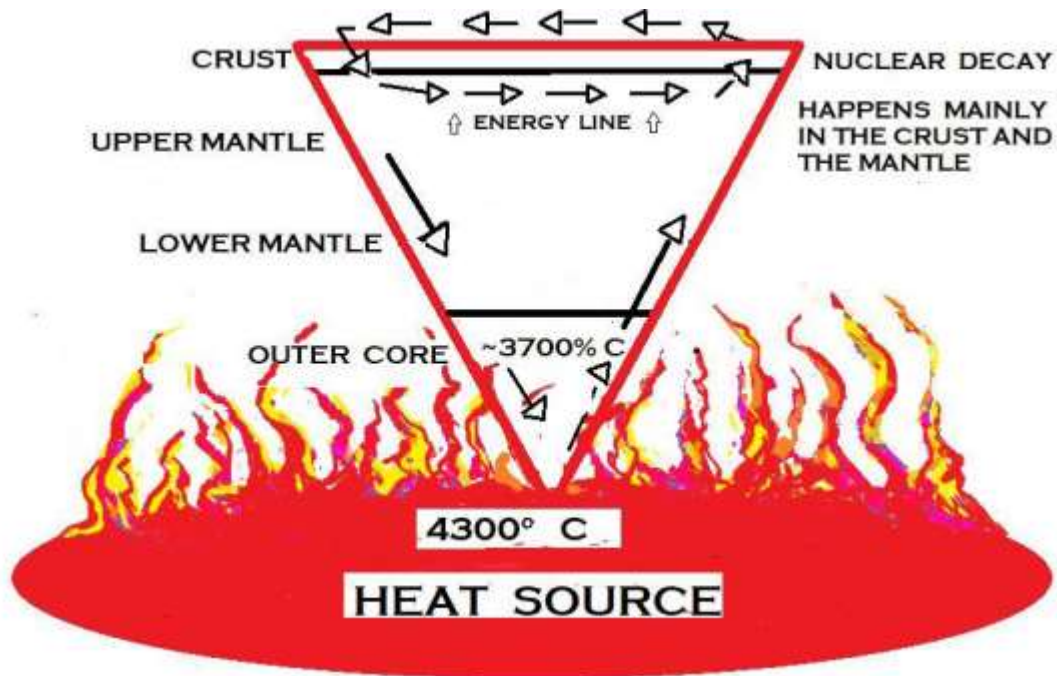
### **The Earth Energy Grid**

Beginning in 2015, the Mountain Stewards Indian Cultural Heritage Program, stumbled onto and began locating narrow energy lines (about 1 foot wide) at sacred sites. Others had already been finding these across multiple continents. At every sacred site encountered since 2015, we have found multiple energy lines and underground water streams associated with the sites. This again seems to be a critical criterion for placement of the sacred site. While the elders so far will not talk about this phenomenon saying, "It is too sacred to talk about," it nevertheless, is present at every sacred site so far found. To us, this phenomenon presents a spiritual reason for deciding on the location for these sites. There must have been one or more elders whose responsibility it was to locate these sites for tribal use.

David Biello writing for the *Scientific American* in July 2011, stated that scientists had determined that "radioactive decay provides more than half of the Earth's total heat, estimated at roughly 44 terawatts." He went on to say that, "Some of that heat may have been trapped in the Earth's molten iron core since the planets formation, while the nuclear decay happens primarily in the crust and mantle." It is this nuclear decay (gamma radiation) that we think is the cause of some of the earth energy lines. The figure on the next page shows how this energy is possibly created and how it flows.

Since all energy must follow the **Principle of Conservation of Energy**, it can be stated that Earth Energy Lines must follow the same principles. Further, if these lines are indeed caused by the release of gamma radiation in the crust and mantle, then it would seem that the energy would form somewhat circular or oval patterns of energy coming out of the earth and then going back into the crust/mantle to create a continuous flow of energy. These lines of energy therefore are probably not long lines crossing long distance of the earth like the Ley Lines but rather shorter lines or couplets of energy coming out of the ground and going back down in a distance probably governed by the density of the earth in that area.

Further, the physics of this phenomenon shows that if you have one line coming out of the earth and flowing in one direction, then there must be an equal and opposite line coming out flowing in the opposite direction. Thus, at every place where energy upwells or downwells into the earth, there

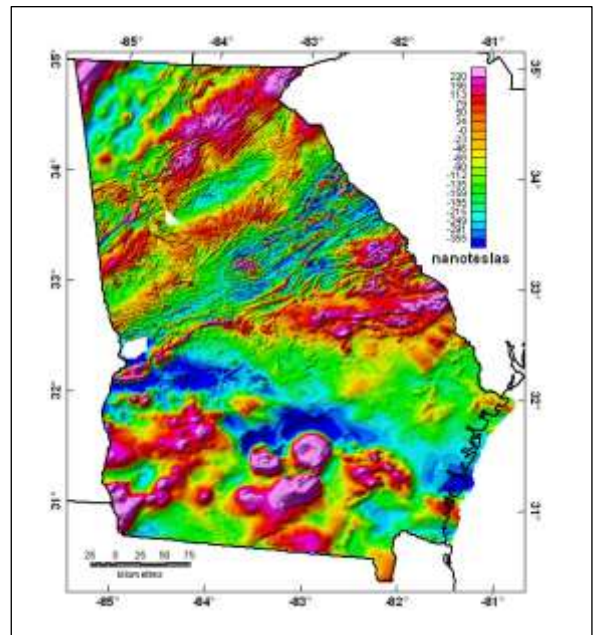


must be two equal and opposite energy lines flowing to keep the energy in balance. So, energy lines will always be found in pairs. When one considers that each line always has an equal and opposite line forming going in the opposite direction, that, in order for this to remain in balance, an infinite amount of energy lines has to be created heading in multiple directions. Thus, this is an energy grid system that must circle the earth in directional patterns but is not uniform.

### **Anomalies in the Grid Pattern**

The magnetic shield surrounding the earth is often drawn in perfect circular patterns which is in fact not true. There are anomalous patterns due to density differentials and other atmospheric and geology factors that cause anomalous magnetic patterns. For instance, in the figure to the right, which is a representation of the aeromagnetic and gravity map pattern for GA, there is not a nice uniform pattern.

Likewise, the Earth Energy Grid pattern is not uniform either. Throughout the pattern, are anomalous patterns of spinning energies, some upwelling and some downwelling. For nomenclature reasons, we refer to these patterns as Geospiral's (upwelling) and Vortexes (downwelling).



Guy Underwood in his book, *The Pattern of the Past* and Dennis Wheatly in his book *The Essential Dowsing Guide* mentioned the existence of Geospirals. Most of their studies were done in the UK. Robert Egby, a renown dowser in the US, followed up on Underwood and Wheatley's work

in the US and has provided some information about this phenomenon. All of the Geospirals we have dowsed so far have an upwelling, counterclockwise rotation which we refer to as being positive energy. The Vortexes downward flowing, clockwise rotation seems to be able to create negative feelings in a person who spends time near them so we refer to them as negative energy. The Native Americans in the Pacific Northwest have traditionally shunned the Oregon Vortex site calling it "Forbidden Ground.

Robert Egby stated that a Geospiral creates a dome of energy with an area of influence depending on the rings of energy created. Like Underwood and Wheatley before him, he has determined that each Geospiral has a number of energy rings around the center of the Geospiral. The spiral rings seem to be in units of 7 and vary from 7 to 49 rings. The rings are located with dowsing rods held in the search mode (straight out in front) and as you walk a radial outwardly from the center, the rods will cross in front of you as you pass by the edge of each ring of energy and then immediately return to the search mode. Our experience to date, has been to find the rings usually spaced about 5-6 feet apart. In some rare cases, the rings are spaced one foot apart. It is likely that the energy flowing outwardly from the Geospiral must at some point reverse and flow back into the earth in order to follow the physics of energy flow. We have also noted the when you find one Geospiral, there will usually be another one some distance away with identical characteristics. Also, located between the two Geospirals, there will be a Vortex of the same characteristics. Current thinking and based on Guy Underwood's work, the common explanation for how these are caused is that the energy lines encounter a "blind Spring" which caused the lines to swirl and flow either out of or into the earth. A "blind spring" is created when underground water wells up toward the surface but is trapped and can't break through to form a spring on the surface.

Measuring where the lines are located is done with dowsing as the rods sense the energy and rotate outwardly from the body 180-degrees. The lines can then be measured using the Gamma Radiation Meter to ascertain their existence. Measuring gamma radiation flow is not a simple task but it seems to follow the same principles as measuring underground water flow.

### ***Spirituality and Its Impact on the Earth Energy Grid***

Understanding spirituality can take a lifetime of study. For most, it is that "sixth sense" of knowing that spirits and the spiritual world exist but being unsure of how to interact with it. Some, especially people with psychic abilities, can see and converse with the spirits. For those who are skeptical of the existence of this spiritual world, study of the decades of works in the Division of Perceptual Studies (DOPS) at the Department of Psychiatry and Neurobehavioral Sciences at the University of VA can open the door to understanding.

At many Native American sacred sites, a guardian spirit(s) may remain as a vigilant protector of it. Some Native American elders and other gifted people can converse with these spirits to learn about the history of the sites. The spirits, on occasion, may ask for support to help address

negative issues that may have occurred at the site to help restore the energy of the site and to put it back in balance.

Over centuries of time, the atrocities and ill-will of the New World settlers toward the Indigenous peoples of North America caused the loss of 80-90% of these people. In retaliation, the Indians reacted by defending their lands and their people as well as committing a number of atrocities on the settlers. Removed from their homes to Oklahoma, the Indians lost contact with their sacred sites. Many of those sites have now been destroyed or adversely impacted. This multi-century conflict resulted in the sacred sites and their guardian spirits being disconnected from their tribes. Somehow, all of this anger and conflict impaired the earth energy grid which became weakened and even disconnected in places.

### ***Reconnecting the Earth Energy Grid***

In 2020/2021, a team of researchers from SC and GA were brought together by providence. Within this team are people who can communicate with the spiritual world. The clear message received in early 2021 was that the Indian spirits wanted help in reconnecting the earth energy grid and the sacred sites. The message received was that ceremonies of healing for the wrongs were to be conducted at four sacred sites, three in GA and one in SC. These ceremonies were the beginning of reconnection of the energy grid. The ceremonies were to be conducted on specific days beginning on May 22 through May 30 at each of the four sites and precisely at 5:33 PM. The ceremony was a simple one. Using burning sage smoke and a feather to direct that smoke in the four cardinal directions, we repeated a ceremonial prayer: "We ask your forgiveness for the harm our ancestors created; we give you our forgiveness for any harm the Indians created; we bless you and we release you."

### ***Impacts of the Ceremonies on a Sacred Site***

Each site has different characteristics so it is impossible to describe the impacts on each one. So, I will use the Mount Oglethorpe, GA sacred sites to show what changed by the ceremony.

Over the centuries, Mt. Oglethorpe had been sacred to the Apalachee, the Creek and the Cherokee. On the mountain are many graves of the Creek and Cherokee. There were also numerous sacred sites including two Vision sites (Apalachee), two Medicine Man Ceremonial Healing sites (Creek), a Ceremonial Burial site (Cherokee) and one other site of unknown purpose. There are Geospirals of different sizes at each of these sacred sites. The ceremony, designed to cover the entire mountain, was conducted at the two vision sites. Prior to doing the ceremony, we had asked which tribe the vision sites belonged to, but were not given an answer. We were told that after the ceremony, we would be given that information.

We conducted the ceremony on May 22 at 5:33 PM. It lasted until 5:40 PM. What happened after the ceremony was astounding. The two Vision sites which previously had been 35-ring Geospirals were now 42-ring Geospirals. Two 7-ring Geospiral became 14-ring Geospirals. The two Medicine Man Ceremonial Healing sites which had been determined to have limited

capabilities with regard to helping with some medical conditions were now unlimited. The two Vision sites whose association with a tribe was not known, were determined to be Apalachee Indians. No one has ever determined that the Apalachee Indians had any presence in this part of GA. On follow up research with this fact, we were able to located the Apalachee village at the base of Mt. Oglethorpe.

Each of the four locations where the ceremonies were held, exhibited changes. They are all now connected to the energy grid. Over time, more changes are occurring including seeing connections occurring as far as the Rocky Mountains. Colleagues in other states have conducted similar ceremonies at their sites. The two original 7-ring Geospirals on Mt. Oglethorpe which changed to 14-ring, have now increased to 21-ring Geospirals. As sites are located that are not connected to the grid, ceremonies are conducted and they are now connected and re-empowered into the grid structure. Over time, we expect to see the Earth Energy Grid fully reconnected and empowered.

### **Spiritual Energy Grid**

Is there such a thing as a Spiritual Energy Grid? Probably not in a physical sense but more likely in places. We interviewed Tom Belt, United Keetoowah Cherokee elder in 2010. He told us the cosmology of the Cherokee. He said, "Life is tantamount to a room. When you are born, you come in one door and you will leave through another door when your journey is over. In that room are all the events that every happened and all the people that ever existed and maybe even all the people that will exist. On your journey through that room, you are to collect all the wisdom of those events and people before your journey ends." Every sacred site and maybe every site has a spiritual signature and story marking it. When we go to these sites and make an offering of tobacco and ask permission to enter, we are most often granted access to the spiritual story of these places. Using dowsing and asking yes and no questions, we have been able to ascertain from the spiritual energy of these places what their purpose was, who was there and who used these sites. Psychics, elders and people who are known as "knowers" can often gain more in-depth information.

Stephen Schwartz in his book, *The Secret Vaults of Time*, published in the 1970's provides the best compellations of spiritual energies associated with archaeology and anthropology of places. In his book, he tells the story reported by a researcher from the Museum of the American Indians by the name of Stiles. Although Stiles did not publish his story, it was later added to the literature by Professor C. W. Weiant. Stiles' story was about his visiting an Algonquin Indian tribe in Canada known as the Montagnais tribe. Schwartz said in his book, "Stiles described a situation in which certain members of the Montagnais habitually repaired to the woods, set up a log shelter about the size of a telephone booth, went inside and, when the power (spiritual and/or energy grid) was sufficiently strong, made contact with a friend or relative who was hundreds of miles away. A two-way conversation was then caried on by clairaudience. Stiles went on to say that while the process was going on, the shelter shook."

Whether this communication is traveling on a spiritual energy grid or riding on the back of the earth energy grid is not known. It does occur. Perhaps, because of the extensive worldwide energy grid, two-way communications could have occurred much as it does today in wireless communications.

Psychics, elders and people who are called “knowers” have been known to communicate with the spirits who have “walked on.” Interestingly, everywhere we have encountered an Indian grave, they are almost always placed over an earth energy line. Culturally, this may be a means for the spirit to be transported to the afterlife; it may also be a means to remain connected to those that remain.

Spirituality and spiritual energies are not well understood and many sceptics deny the validity of any written or spoken documentation of this phenomenon. However, considering the decades of research studies done in some academic communities on Spirituality, it clearly does exist.

## **OTHER ENERGY GRIDS**

### **Hartmann/Curry/Benker Energy Grids**

We first encountered knowledge of the Hartmann/Curry Energy Grid in Kathe Bachler’s book *Earth Radiation, The Startling Discoveries of a Dowser*. Kathe studied over 3,000 homes and 11,000 cases of medically induced health effects caused by earth radiation. In her research she was able to associate the diagnosed medical conditions of individuals with their encounter with certain previously not well-known earth energy grids. Her findings were confirmed by medical doctors and other researchers. Some of her research has shown that the energy lines can cause serious illness such as cancer and other harmful diseases. These energies are believed to be electro-magnetic but very little published research has confirmed that fact as these energy lines are difficult to measure.

Kathe’s book does a good job explaining these energy grid systems. However, the website Gaia Legacy does a better job. I cannot explain it any better than they do so I will quote their information.

### **Hartmann Grid**

“The grid is named after Dr. Ernst Hartmann, who was the first to discover and research this grid. He conducted geobiological research with scientists from related disciplines to verify his findings. The Hartmann grid is a cubic network of earth rays that encompasses the earth horizontally and vertically. The lines of this grid run from north to south at intervals of 2 m and from west to east at intervals of 2.50 m. This creates not cubes, but prisms with a width-to-length ratio of 4/5. The magnetic energies of these prisms alternate from positive to negative, which means that they are generally balanced and have no significant effect on people. However, when the Hartmann grid lines or their intersections cross other grids, water veins or fault lines, they can create rays that are as harmful as the others. They usually cause nervous disorders, frequent illnesses, sleeplessness and general uneasiness.”

## Curry Grid

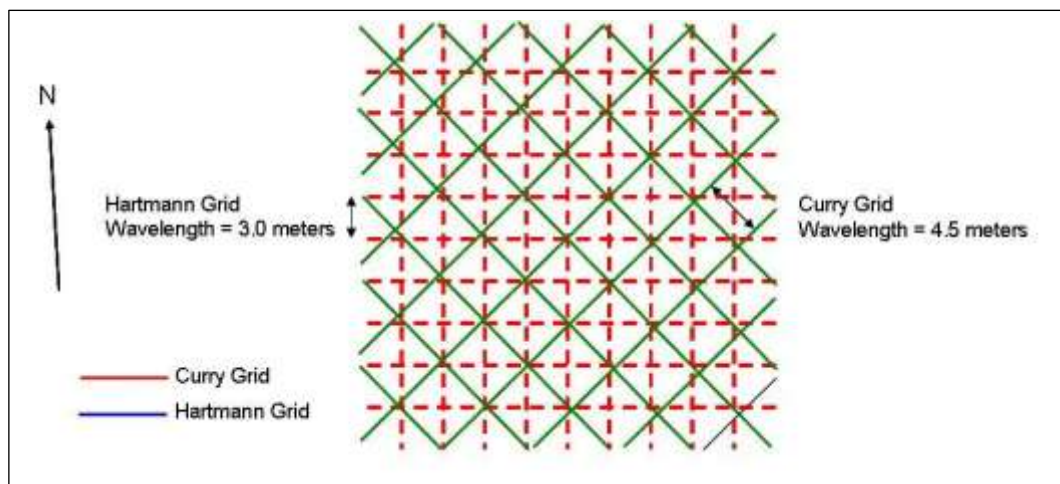
“The energetic grid is named after Dr. Manfred Curry, who discovered it and was the first to report on it, attracting a great deal of attention. The Curry grid is a global cubic network, but its earth rays run diagonally, unlike the Hartmann and Benker grids, which run around the earth horizontally.

The cubes formed by the Curry grid have a width of 3 meters and the energy lines are about 20 cm wide. This grid network runs from pole to pole with a northwest-southeast and northeast-southwest orientation. It is influenced greatly by the phases of the moon and emits much more radiation at night than during the day, especially when the moon is full. Sleep disorders are attributed to this grid, especially at full moon and sensitive people sometimes find the radiation of this grid particularly troublesome. The intersections of the Curry grid with other grids generate the highest levels of radiation and can cause regular health problems such as migraines, headaches and tooth and jaw pain. The highly energetic Curry grid also resonates with the following electromagnetic lines and fields.”

## Benker Grid

“The grid is named after the master carpenter and avid dowser Anton Benker, who discovered it and documented its presence. The Benker grid, unlike the Hartmann grid, is symmetrical (forming cubes) and runs around the earth nearly parallel to the former, although there are minor variations. It is comprised of rows and columns of 10 x 10 meter cubes with alternating positive and negative charges which affect humans quite directly. The positive fields can be harmful if one stays in them for too long: they can cause overstimulation, inflammation, nervousness and general restlessness. The negative fields can draw energy out of the body and have a weakening effect, lowering our immune system’s defenses against illness. The Benker grid emits no immediately harmful radiation, but during lengthy stays near Benker lines or shorter stays at points where grid lines cross faults or water veins and other grids, its interference can become noticeable, especially when the intersections of more than one grid coincide.”

When combined graphically, the Hartmann and Curry grid looks like the diagram on the right. These cubic energy grid systems



surround the earth and can be found every where we exist. The graph above shows the Hartmann



lines being spaced 3 meters apart. Others show the Hartmann lines to be 2.5 meters east to west and 2 meters north to south. Curry lines are reported by others to be between 4 and 16 meters apart. These lines vary in size from 20 to 40 cm's.

### **Water Grid Lines**

The majority of the earth's fresh water is located underground and transverse the subsurface in lines of water flow, some very large and many much smaller. The pattern might be similar to the flow of blood in a human in that there are major flows, (veins), secondary flows and capillary flows. The flow of water through the earth acts identical to current flowing in a wire and cause electromagnetic energy to be created known as geopathic stress. The flow follows the left-hand rule. If you point your thumb of the left hand in the direction of water flow, the fingers curling around the flow show the electromagnetic energy flow. The type of energy grid system is shown in the figure below.

The complexity of all of these energy grid systems and their interaction with each other is far beyond the understanding of the any researchers we have encountered or studied so far. Suffice it to say, a comprehensive understanding of earth energies may never be understood at least in this lifetime. However, the ancients and some Indigenous elders may have long ago understood it much better, but that knowledge we believe is long gone.

